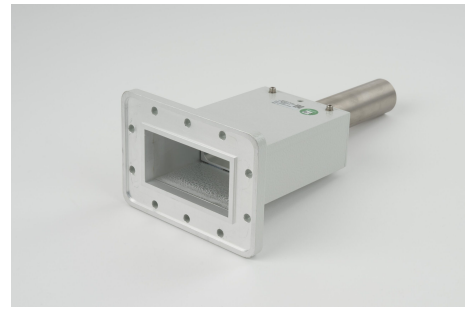


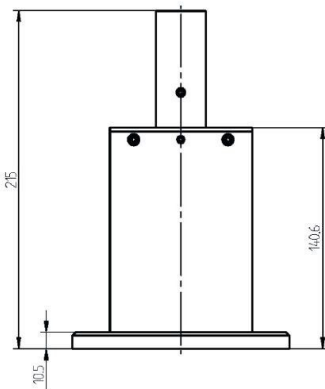
KURZSCHLUSSSCHIEBER - MW2009D-260ED

Categories: Hohlleiterkomponenten

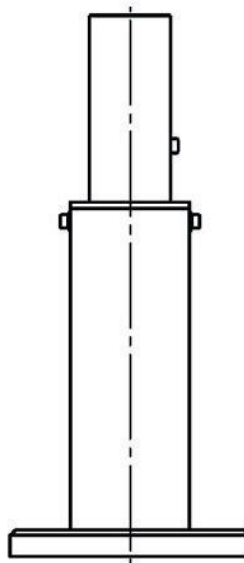


BILDERGALERIE

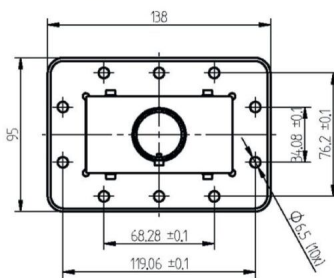
Outline Dimensions (mm(inch))



Outline Dimensions (mm(inch))



Outline Dimensions (mm(inch))



ZUSÄTZLICHE INFORMATIONEN

Frequenz [MHz]	2450
Leistung [W]	3000
Hohlleitergröße	WR340 / R26
Flange	PDR
Produktgruppe	Kurzschlusschieber